

Single Handle Kitchen Faucet

FEATURES:

- *Brass and copper waterways*
- *Metal Lever Handle*
- *Ceramic Disc Cartridge*
- *With side spray*
- *100% factory pressure tested*
- *Brushed Nickel finish*



APPLICABLE STANDARDS/CODES:

Specified model meets or exceeds the following:

- *IAPMO/UPC*

AVAILABLE FINISHES:

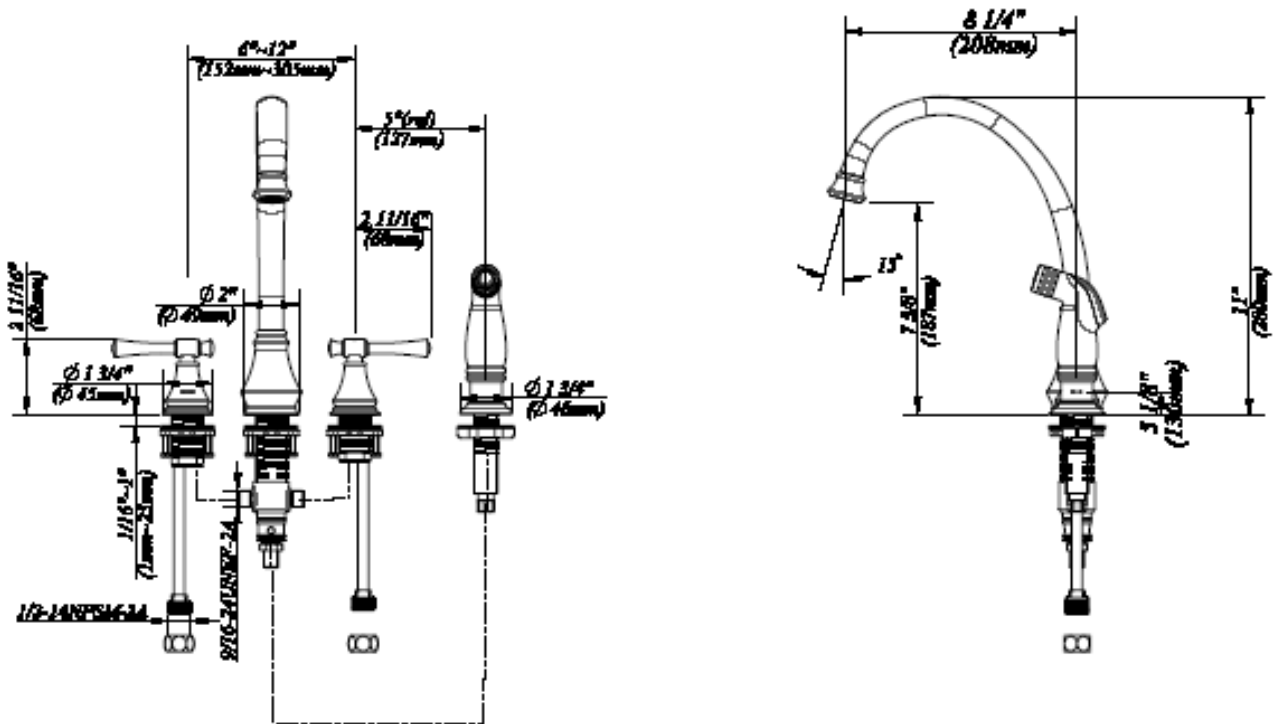
- *CP = Polished Chrome*
- *NP = Brushed Nickel*
- *RL = Oil Rubbed Bronze*

SPECIFIED MODEL:

Model	Description	Finish	
MF-230-SN	Single Handle Kitchen Faucet	NP	

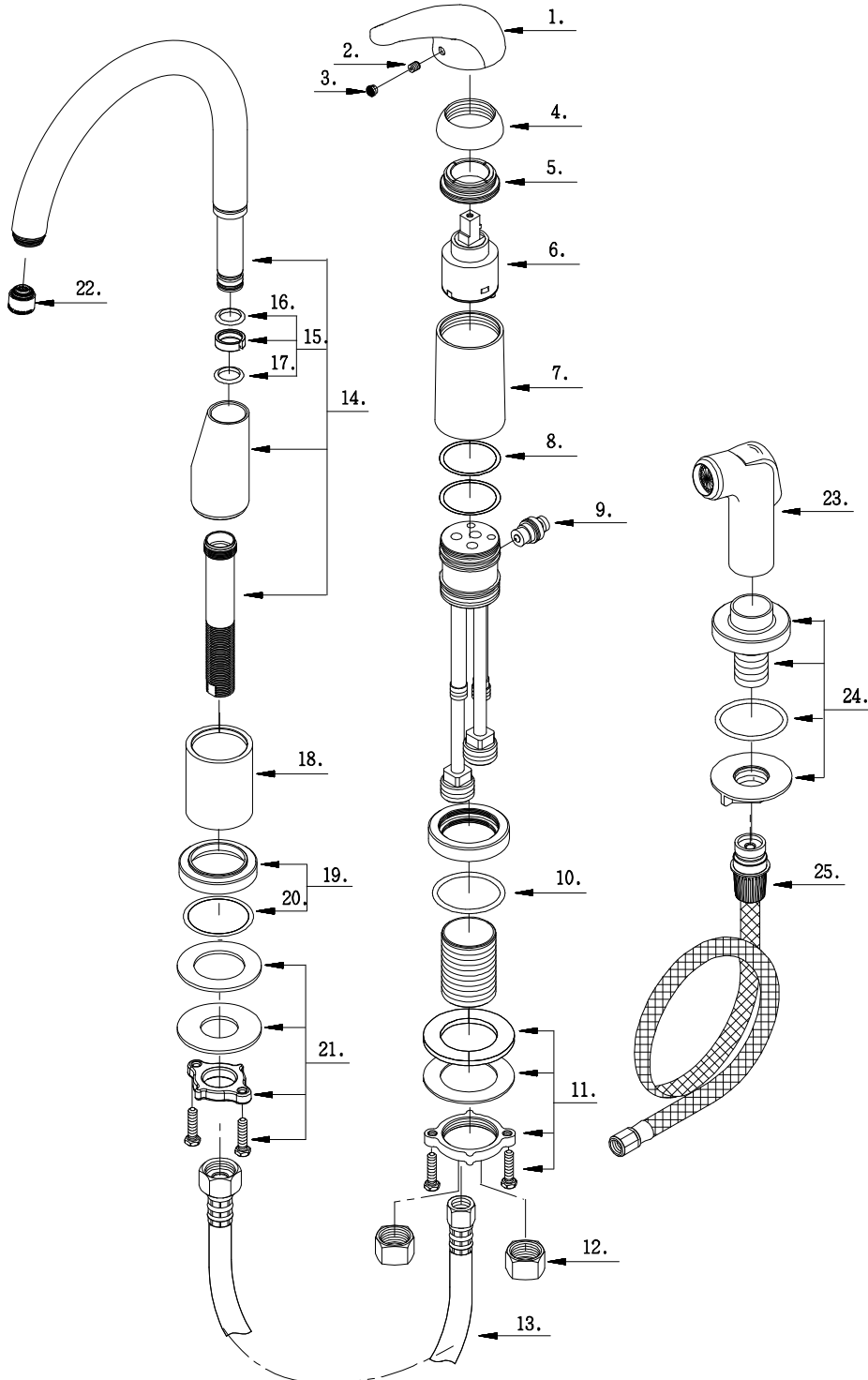


PRODUCT SPECIFICATION DIAGRAM





EXPLODED DRAWING





PARTS LISTING

No.	Part Name	Part No.
1	Metal Handle	A029048
2	Screw (M5 * 5mm L)	A008103
3	Index Button-Cold/Hot	A028065
4	Trim Cap	A103016
5	Locking Nut	A104002
6	Ceramic Disc Cartridge	A507348N
7	Handle Sleeve	A041008N
8	O-Ring (Φ 1-5/16" ID * Φ 1-1/2" OD)	A004033N
9	Spray Diverter w/Vacuum Breaker	A501011N
10	O-Ring (Φ 1-9/16" ID * Φ 1-3/4" OD)	A048060
11	Mounting Hardware	A663038
12	Coupling Nut	A009016
13	Supply Hose	A105027N
14	Spout Assembly	A666144N
15	Spout Seal Kit	A663204N
16	O-Ring (Φ 3/4" ID * Φ 15/16" OD)	A004096N
17	O-Ring (Φ 9/16" ID * Φ 3/4" OD)	A004005N
18	Spout Sleeve	A041493
19	Spout Trim Ring	A667049
20	O-Ring (Φ 2" ID * Φ 2-3/16" OD)	A048062
21	Mounting Hardware	A603186
22	Aerator	A500162N-50
23	Side Spray	A503002N
24	Spray Holder Assembly (2-1/2" L)	A664173
25	Spray Hose	A511000N