

PEARL
ACCEPT NO IMITATIONS™

NEW!



**HEAVY DUTY
STAINLESS STEEL
WATER TRAY**

High durability tray for heavy-duty jobs

**10" TILE SAW
PART# PA10**

PA10™

RIP CUT
24" IN
DIAGONAL CUT
18" IN

POWERFUL
2 HP
MOTOR

"PRO TILE SAW AT A VALUE PRICE."

STEEL FRAME AND CAST ALUMINUM COMPONENTS

POWERFUL 2 HP MOTOR WITH THERMAL OVERLOAD PROTECTION

BELT DRIVEN BLADE SHAFT

HEAVY DUTY STAINLESS STEEL WATER TRAY

RUBBER-MATTED TABLE

MOTOR	2 HP, 115v, 60Hz, single phase, 3,450 rpm with thermal overload protection
CUTTING CAPACITY	Depth of cut: Max. 3-1/4" Rip cut: 24" x 24" tile. Angle cut: 18" x 18" tile
BLADE CAPACITY	7" to 10" with 5/8" arbor blade
WEIGHT	73 lbs.



**10" P2 PRO-V™ PORCELAIN
BLADE INCLUDED!**
#PV10PT

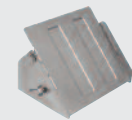
INCLUDED WITH SAW: 10" P2 PRO-V™ Porcelain blade, heavy duty stainless steel water tray, 45°/90° rip guide, universal wrench, water pump, Owner's manual.

One-year limited warranty

OPTIONAL ACCESSORIES:



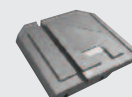
NEW!
**PEARL SAW
STAND**
#V35010-UVXL



MITER BLOCK
#S1000-34



ANGLE GUIDE
#V370060



**SIDE
EXTENSION
TABLE**
#V100102

For more information on Pearl Abrasive Company products, please contact:

800.969.5561 USA / **800.387.0008** CANADA / **PEARLABRASIVE.com**