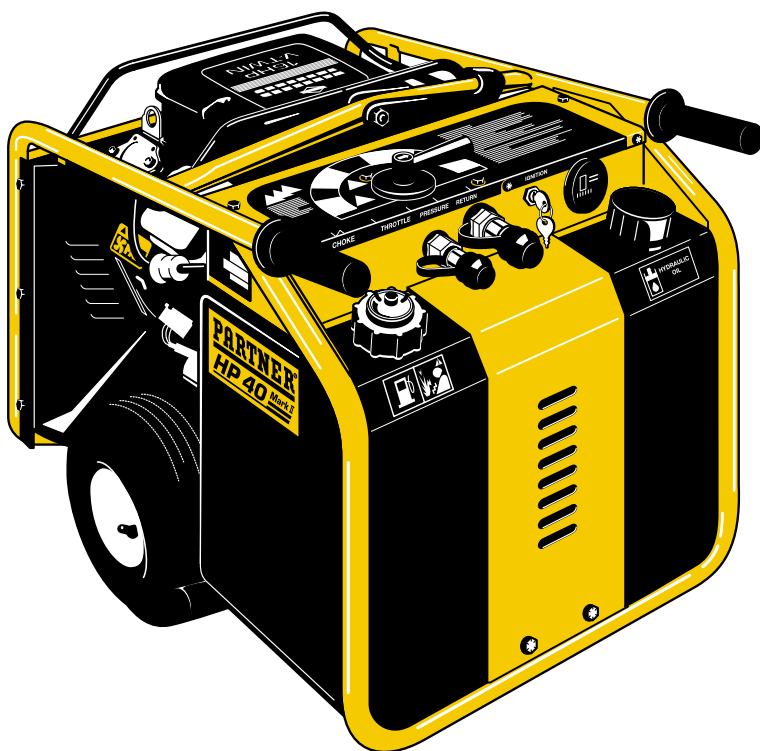


PARTNER

Illustrated Parts List 2000-05 CD

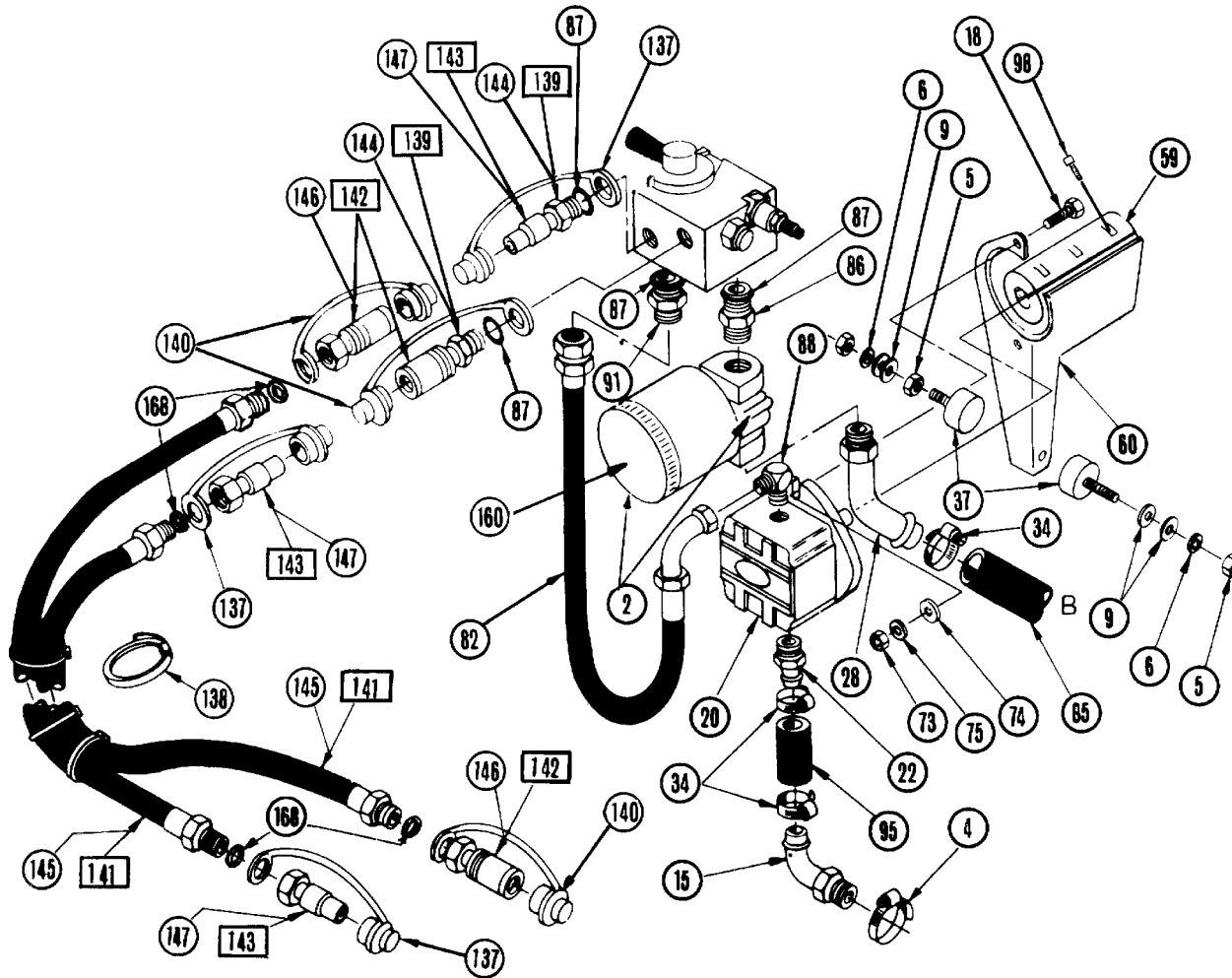
HP40 Mark II 1992-2000 (Automatic Throttle)



108 30 00-82

PARTNER®

A



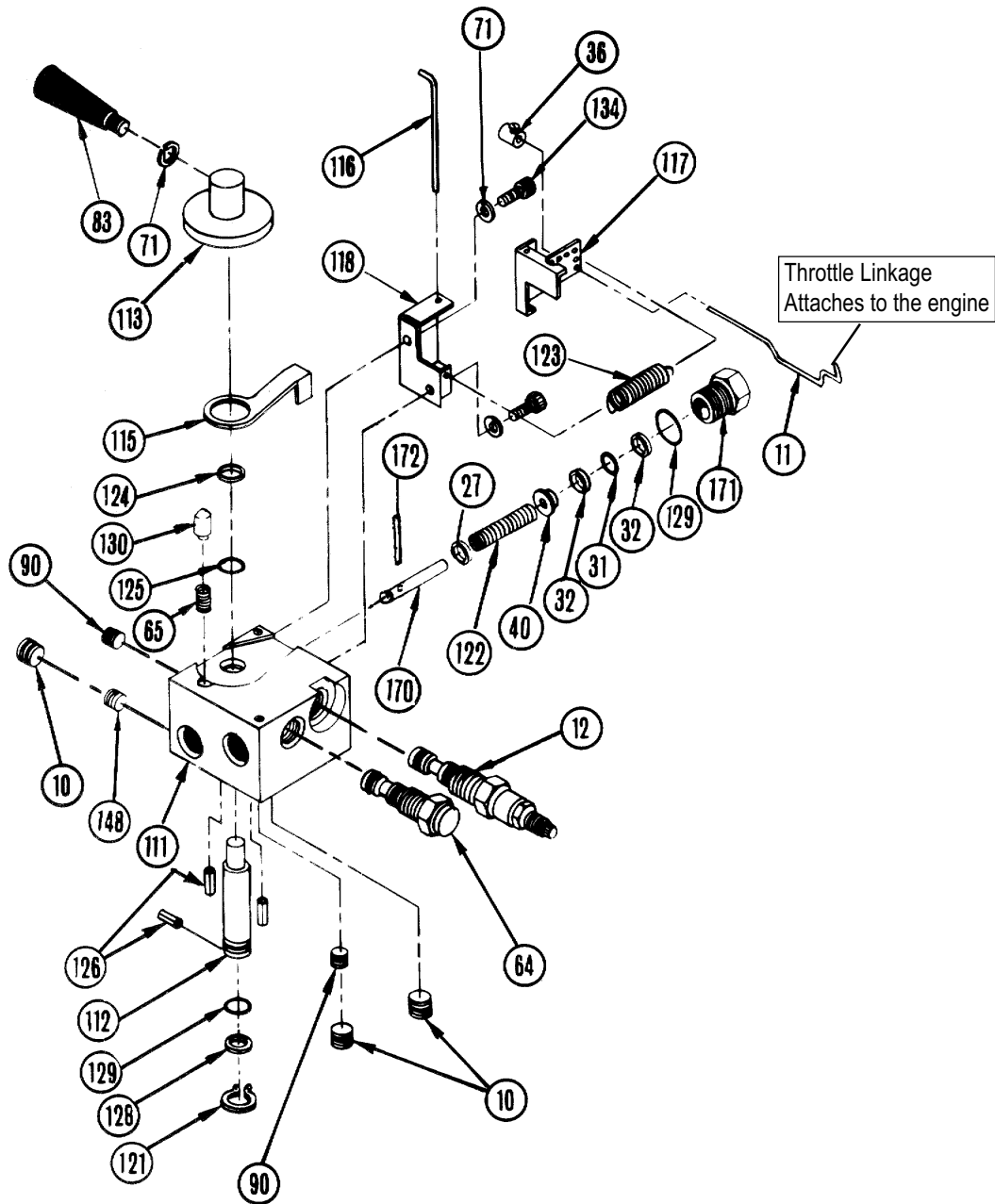
XXX Indicates parts with NPT threads (USA)

506 17 43-24 Hose set cpl. with couplers, 30 feet, NPT threads (USA)

506 17 43-21 Hose set cpl. with couplers (incl. water hose) , 7 meters, BSP threads

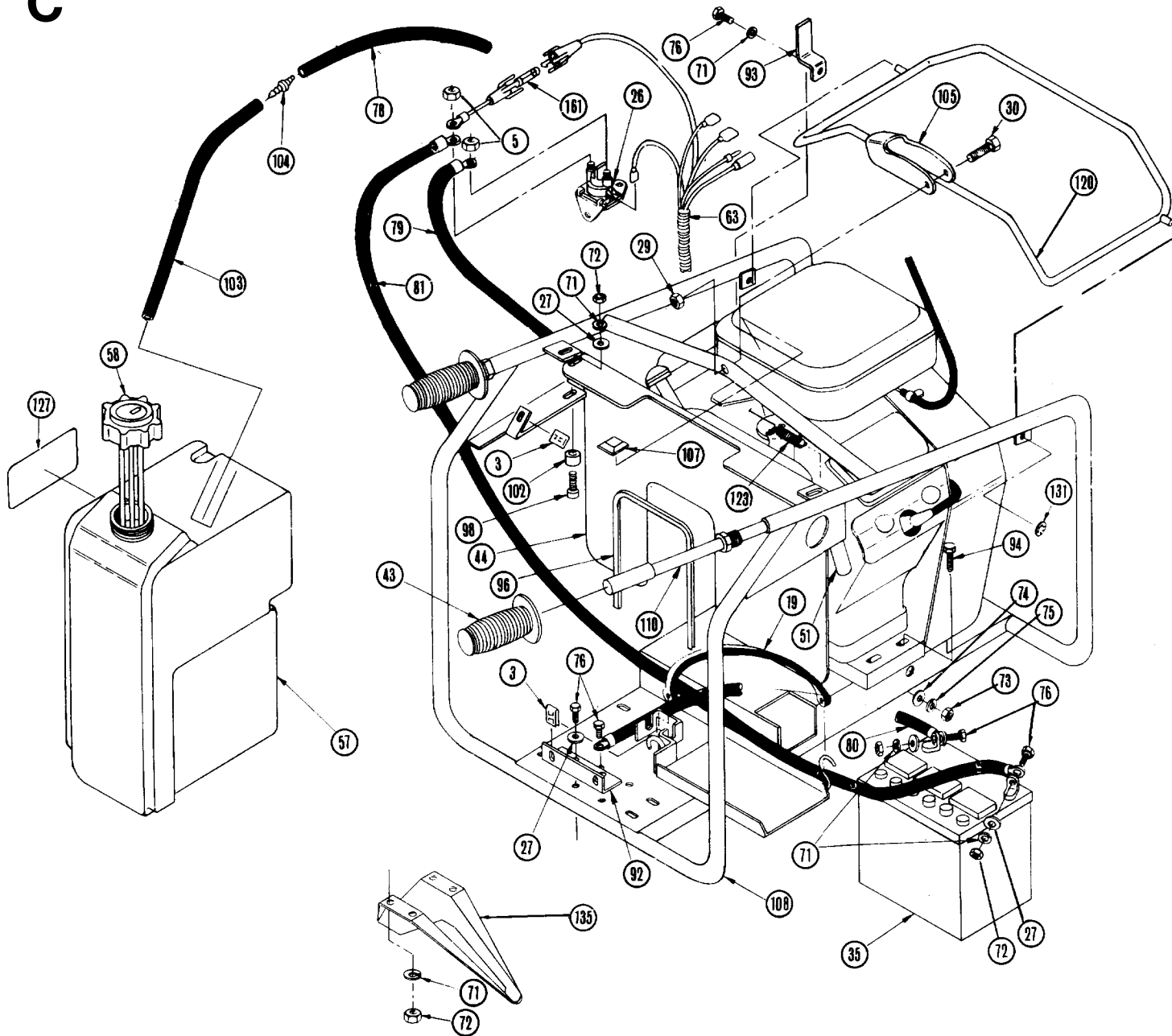
- | | | |
|-----|--------------|---------------------------------|
| 2 | 531 03 12-50 | Manifold/ Filter CPL |
| 4 | 531 03 12-52 | Clamp, Hose at Tank |
| 5 | 531 03 11-75 | Nut, 1/4"NC HH PL |
| 6 | 735 11 64-50 | Washer, Lock 8 |
| 9 | 503 23 01-01 | Washer, Flat 8 |
| 15 | 531 03 11-59 | Fitting, at Tank |
| 18 | 506 03 32-02 | Bolt, M6S 8x37 |
| 20 | 531 03 11-72 | Pump Hydraulic |
| 22 | 531 03 11-76 | Fitting, at Pump |
| 28 | 531 03 12-03 | Fitting, Hose Cooler |
| 34 | 502 40 93-01 | Clamp, Hose, at Filter |
| 37 | 531 03 11-74 | Rubber Mounting |
| 59 | 531 03 11-71 | Coupler, Pump/Engine |
| 60 | 531 03 15-87 | Bracket, Pump Support |
| 73 | 732 21 18-01 | Nut, LockM8 |
| 74 | 503 23 01-01 | Washer, Flat 8 |
| 75 | 735 11 64-50 | Washer, Lock 8 |
| 82 | 531 03 11-80 | Hose, Pressure |
| 85 | 531 03 11-57 | Hose RET.2575-12x34" |
| 86 | 531 03 12-01 | Fitting, at Filter |
| 87 | 740 48 13-03 | O-ring, 18,72 x2.62 |
| 88 | 531 03 11-79 | Fitting, at Pump |
| 91 | 531 03 11-98 | Fitting, Hose Pump |
| 95 | 531 03 11-77 | Hose, Pump Suction |
| 98 | 725 53 70-55 | Bolt, MC6S 6x20 |
| 137 | 506 11 44-01 | Dust cover 1/2"FF Male |
| 138 | 506 17 47-10 | Tie, (for hose) |
| 139 | 505 51 02-72 | Fitting NPT (USA) |
| 140 | 506 17 37-01 | Dust cover 1/2"FF Female |
| 141 | 506 17 44-24 | Hose 1/2"x 30', NPT (USA) |
| 142 | 506 17 36-24 | Coupl. FF 1/2" NPT Female (USA) |
| 143 | 506 17 38-24 | Coupl. FF 1/2"NPT Male (USA) |
| 144 | 531 03 11-41 | Fitting BSP |
| 145 | 506 17 44-20 | Hose 1/2"x 9,14m BSP |
| 146 | 506 17 36-21 | Coupl. FF 1/2" BSP Female |
| 147 | 506 17 38-21 | Coupl. FF 1/2"BSP Male |
| 160 | 531 03 12-02 | Filter, Hydraulic Oil |
| 168 | 740 38 40-01 | Sealing Washer |

B

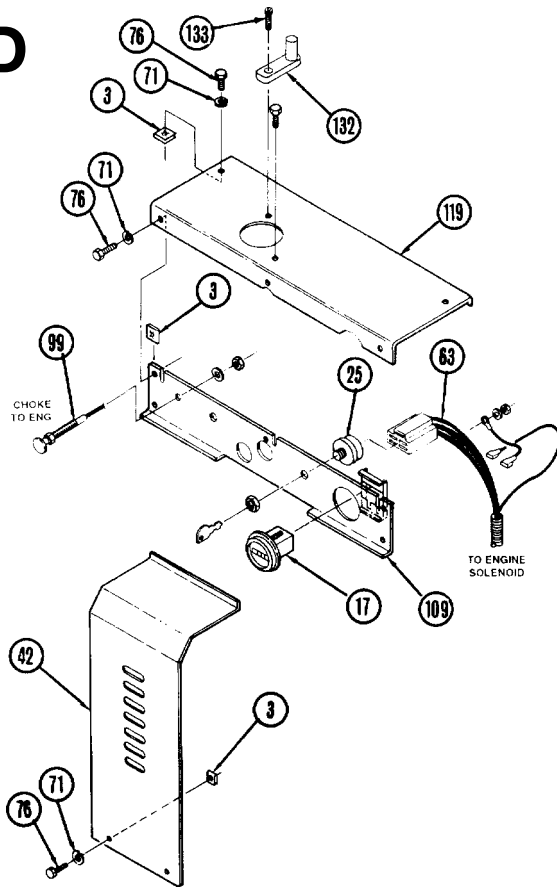


10	531 03 11-96	Plug 1/8"NPT,Allen
11	531 03 15-88	Throttle Link
12	531 03 11-91	Valve, Press Relief
27	734 11 56-01	Washer, Flat 6
31	740 48 06-02	O-ring 6.07x1,78
32	531 03 15-71	Backup Ring
36	531 03 15-91	Stop Ring, Throttle
40	531 03 15-70	Retainer
64	531 03 11-92	Valve, Hydraulic Flow
65	531 03 11-87	Spring, Detent
71	734 11 53-01	Washer, Lock
83	531 03 11-90	Handle, Flow Select
90	531 03 11-46	Plug,1/16" NPT, Allen
111	531 03 15-57	Manifold, Valve
112	531 03 15-58	Valve, Flow Select
113	531 03 15-66	Knob, Flow Select
115	531 03 15-65	Lever Throttle Stop
116	531 03 15-76	Pin, Hinge
117	531 03 15-75	Lever Throttle Contr.
118	531 03 15-74	Bracket Thrott. Contr.
121	531 03 15-62	Retaining ring 3/4"
122	531 03 15-69	Spring, Piston
123	531 03 15-52	Spring, Return Throttle
124	531 03 15-64	Backup Ring
125	740 48 17-02	O-Ring 18,77x1,78
126	721 42 06-00	Pin FRP 3x12
128	531 03 15-61	Backup Ring
129	740 48 15-02	O-Ring 15,60x1,78
130	531 03 15-67	Plunger, Detent
134	725 53 64-01	Bolt, MCGS 6x10
148	531 03 11-93	Orifice
170	531 03 15-93	Piston Throttle
171	531 03 15-94	Cap Throttle Control
172	721 41 87-70	PIN

C



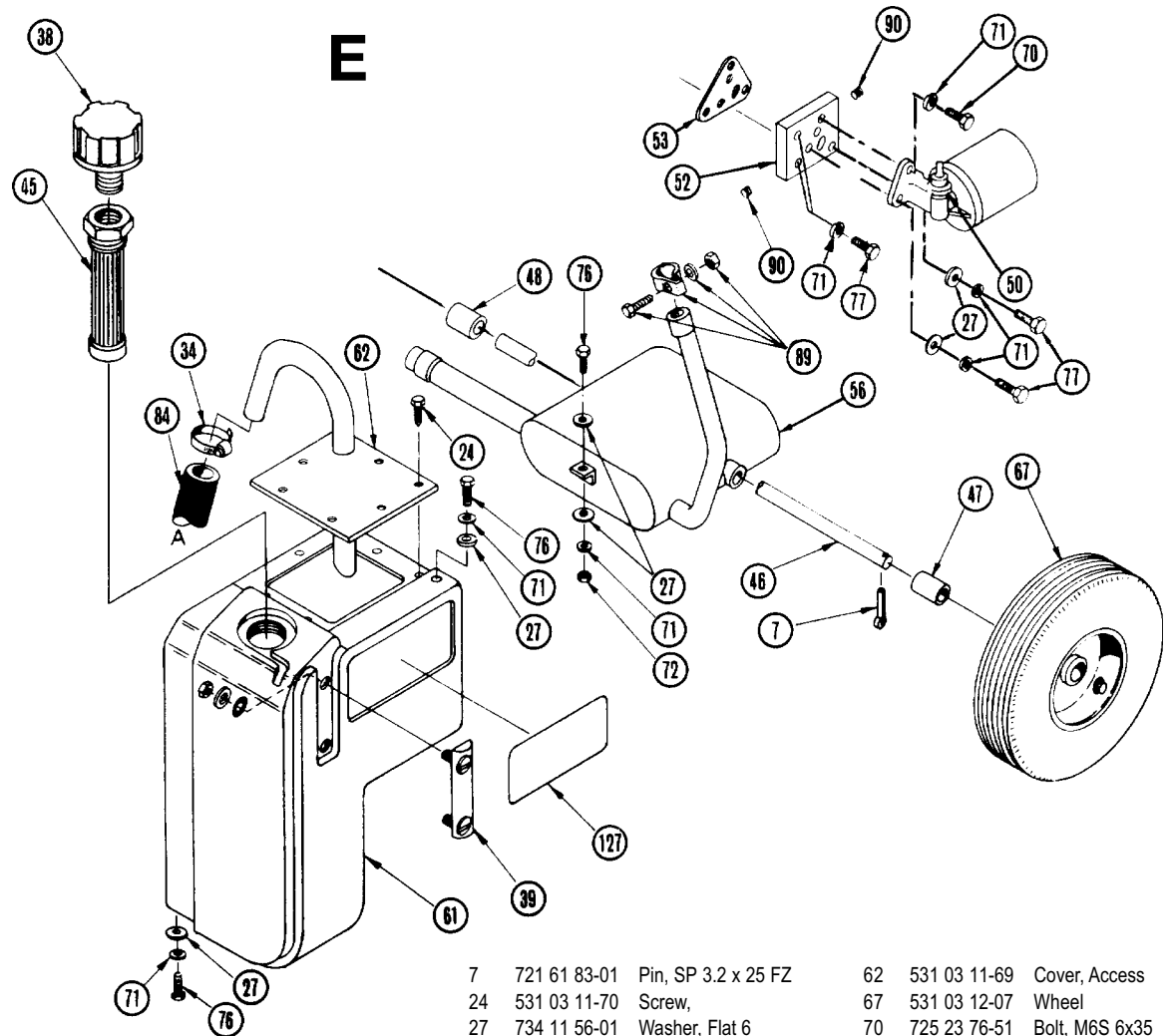
- | | | |
|-----|--------------|-------------------------|
| 3 | 531 03 11-64 | Nut |
| 5 | 531 03 11-75 | Nut, 1/4"NC HH PL |
| 19 | 531 03 12-16 | Strap, Batt. Holder |
| 26 | 531 03 12-15 | Starter Solenoid |
| 27 | 734 11 56-01 | Washer, Flat 6 |
| 29 | 731 23 20-01 | Nut, M10 |
| 30 | 725 25 00-71 | Bolt, M6S 10x4 |
| 35 | 506 78 88-01 | Battery 24AH |
| 43 | 531 03 12-34 | Grip, Handle |
| 44 | 531 03 12-17 | Baffle, Heat |
| 51 | 531 03 11-48 | Manifold, Exhaust |
| 57 | 531 03 12-27 | Tank, Fuel |
| 58 | 531 03 12-28 | Cap/Gauge Fuel |
| 63 | 531 03 21-25 | Wiring, Complete |
| 71 | 734 11 53-01 | Washer, Lock |
| 72 | 731 23 16-01 | Nut, MG |
| 73 | 732 21 18-01 | Nut, LockM8 |
| 74 | 503 23 01-01 | Washer, Flat 8 |
| 75 | 735 11 64-50 | Washer, Lock 8 |
| 76 | 725 23 68-51 | Bolt, MGS 6x16 |
| 78 | 531 03 12-29 | Hose, Fuel L = 220mm |
| 79 | 531 03 12-14 | Cable, Starter, Red 8" |
| 80 | 531 03 12-12 | Cable, Batt. Black 16" |
| 81 | 531 03 12-13 | Cable, Battery, Red 34" |
| 92 | 531 03 12-10 | Bracket, Pump Cover |
| 93 | 531 03 12-32 | Bracket, Hose Support |
| 94 | 506 03 32-02 | Bolt M6S-8x37 |
| 96 | 531 03 12-18 | Trim |
| 98 | 725 53 70-55 | Bolt, MC6S 6x20 |
| 102 | 531 03 12-35 | Guide, Tank Support |
| 103 | 531 03 12-29 | Hose, Fuel Tank 480mm |
| 104 | 531 03 12-30 | Fitting, Fuel |
| 105 | 531 03 12-36 | Bracket, Lifting Eye |
| 107 | 531 03 15-82 | Bumper, Filter Cover |
| 108 | 531 03 15-51 | Frame Mark II |
| 110 | 531 03 15-80 | Handle, Bar MklI |
| 120 | 531 03 15-81 | Holder, Hose Compl. |
| 123 | 531 03 15-52 | Spring, Return Thrott |
| 127 | 531 03 15-84 | Partner HP40-II Decal |
| 131 | 735 58 41-00 | Washer, Locking |
| 135 | 531 03 15-77 | Foot, Rear |
| 161 | 531 03 12-53 | Fuse, 30 AMP |

D

3	531 03 11-64	Nut
17	531 03 12-23	Gauge, Hour Meter
25	531 03 12-24	Switch, Ignition
42	531 03 21 26	Panel, Filter
63	531 03 21-25	Wiring, Complete

71	734 11 53-01	Washer, Lock
76	725 23 68-51	Bolt, MGS 6x16
99	531 03 12-21	Cable, Choke
109	531 03 15-78	Panel Controls MkII
119	531 03 15-79	Panel, Top MkII

132	531 03 15-90	Lever Stop, Valve Pos.
133	725 23 66-51	Bolt, M6S 6x12

E

7	721 61 83-01	Pin, SP 3.2 x 25 FZ
24	531 03 11-70	Screw,
27	734 11 56-01	Washer, Flat 6
34	502 40 93-01	Clamp, Hose, at Filter
38	531 03 11-67	Cap, Hydr.Tank

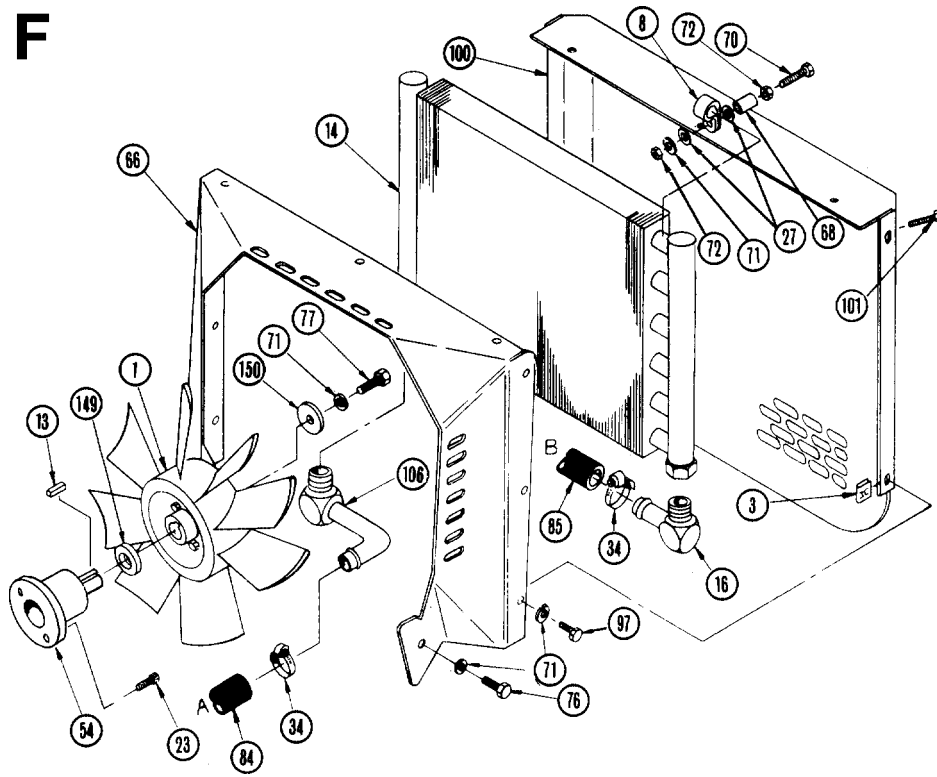
39	531 03 11-68	Gauge, Sight/Temp
45	531 03 11-66	Strainer
46	531 03 12-04	Axle
47	531 03 12-05	Spacer, Right Wheel
48	531 03 12-06	Spacer, Left Wheel

50	531 03 11-47	Switch, Oil Pressure
52	531 03 11-45	Manifold, Oil Filter
53	531 03 11-44	Gasket, Manifold
56	531 03 11-50	Muffer
61	531 03 11-65	Tank, Hydraulic

62	531 03 11-69	Cover, Access
67	531 03 12-07	Wheel
70	725 23 76-51	Bolt, M6S 6x35
71	734 11 53-01	Washer, Lock
72	731 23 16-01	Nut, MG
76	725 23 68-51	Bolt, MGS 6x16
77	725 23 70-51	Bolt, MGS 6x20
84	531 03 11-01	Hose, RET.2575-12X25"
89	531 03 11-49	Clamp, Exhaust
90	531 03 11-46	Plug, 1/16" NPT, Allen

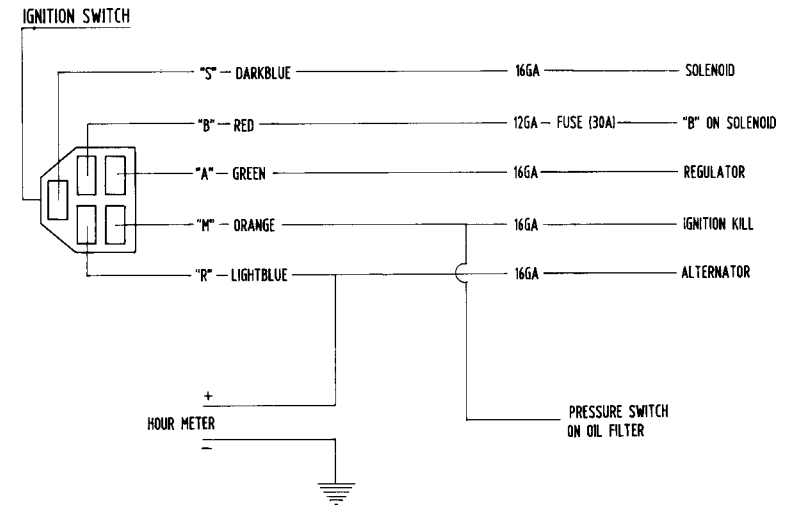
127	531 03 15-84	Partner HP40-II Decal
-----	--------------	-----------------------

F



1	531 03 11-54	Fan, Hydraulic Cooler	76	725 23 68-51	Bolt, MGS 6x16
3	531 03 11-64	Nut	77	725 23 70-51	Bolt, MGS 6x20
8	531 03 11-61	Clamp, Cooler MTG	84	531 03 11-01	Hose, RET.2575-12X25"
13	531 03 15-54	Key, 3/16"x1.19"	85	531 03 11-57	Hose RET.2575-12x34"
14	531 03 11-55	Cooler	97	725 23 66-51	Bolt, M6S 6x12
16	531 03 11-56	Fitting, Right	100	531 03 11-60	Grill
23	531 03 11-52	Bolt, 5/16 NC x3/4"	101	531 03 12-38	Bolt, 6x30 Frame
27	734 11 56-01	Washer, Flat 6	106	531 03 15-56	Fitting, Left
34	502 40 93-01	Clamp, Hose, at Filter	149	531 03 15-55	Spacer, Fan
54	531 03 15-53	Shaft, Fan MarkII	150	503 23 01-13	Washer Fan 6.4x18.9
66	531 03 11-63	Shroud, Cooler			
68	531 03 11-62	Spacer, Cooler			
70	725 23 76-51	Bolt, M6S 6x35			
71	734 11 53-01	Washer, Lock			
72	731 23 16-01	Nut, MG			

G



H



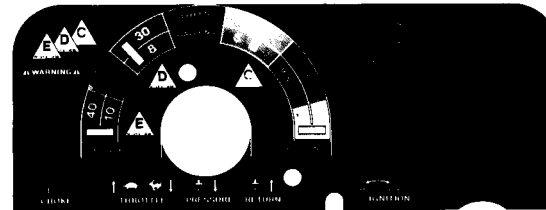
531 03 15-84



531 03 15-86



531 03 12-44



531 03 15-85



531 03 12-45



531 03 12-48