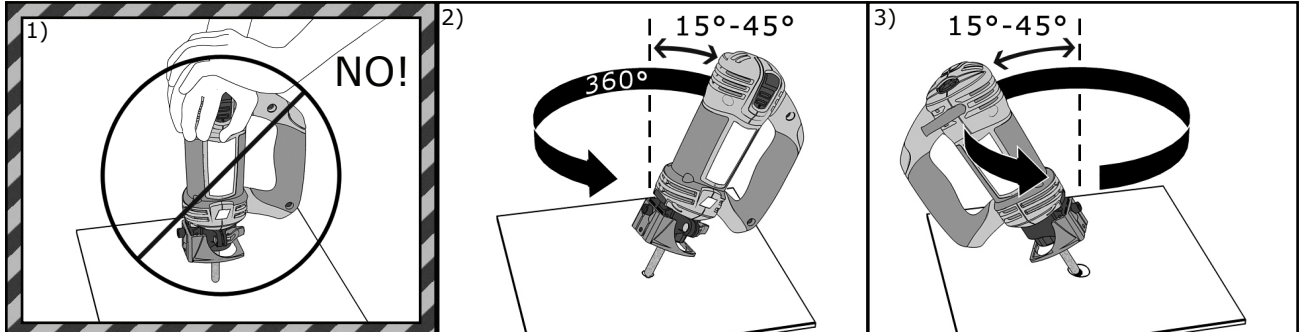


# PLEASE READ FIRST!

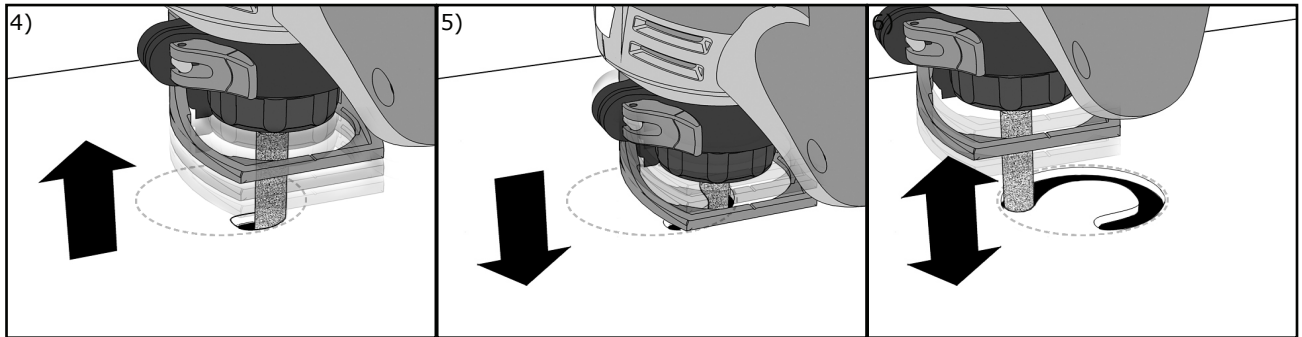


**DO NOT PUSH DOWN ON THE TOOL.** This will burn out the bit very quickly. Allow the weight of the tool to apply pressure on the tile. (Figure 1)

**Starting a pilot hole:** Create a pivot point in the tile while holding the tool at a  $15^{\circ}$ - $45^{\circ}$  from the vertical (Figure 2). Rotate the tool around the pivot point. Continue the circular (conical) motion until you plunge completely through the tile. **Do not push down on or apply constant pressure on the Floor Tile XBIT while starting the pilot hole.**



**Making the cut:** After making the pilot hole, begin cutting out your shape while moving the tool up and down. This will increase the speed of cut and prevent the bit from burning out. See the examples below.



TIP/xxx/xxx:

- To minimize dust, use with the dust extractor attachment (RZVAC1).  
xxxxxx  
xxxxxx

Call 1-877-ROTOZIP for any questions.



Insert sheet p/n  
2610948757

Robert Bosch Tool Corp  
Mt. Prospect, IL 60056-2230  
[www.rotolzip.com](http://www.rotolzip.com)  
1-877-ROTO-ZIP (1-877-788-6947)

